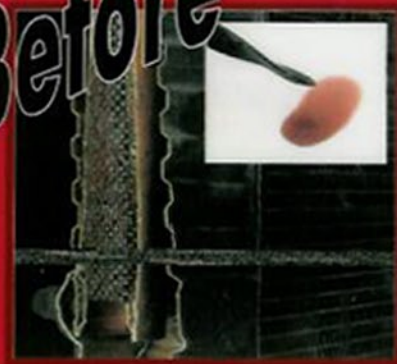


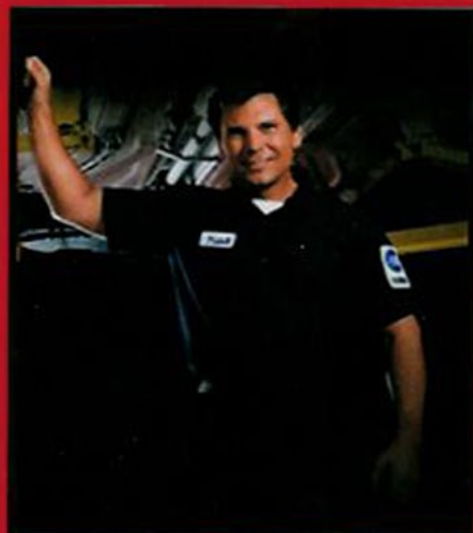
## Before



## After



*"Regular flushing and filter changing is a must in proper transmission care..."*



*"Nearly 9 out of 10 transmission failures are due to overheating and fluid contamination. The transmission's vital parts can clog with sludge and varnish."*

## Transmission Flush, Fluid Exchange and Conditioning

*Install Wynn's Wynn's X-Tend Transmission Flush  
Install Wynn's Wynn's X-Tend Transmission Conditioner*

Change the transmission fluid, use a cleaner to remove contaminants, add a treatment to condition seals.

## Transmission Flush, Fluid Exchange, Conditioning, Filter Change and Inspection

*Install Wynn's X-Tend Transmission Flush  
Install Wynn's X-Tend Transmission Conditioner*

Utilizing patented Wynn's transmission equipment we will:

- ◆ Remove over 95% of the used contaminated fluid

Proprietary flushing chemicals are added to the old ATF to:

- ◆ Safely remove unwanted sludge and varnish deposits.

Proprietary conditioning chemicals are added to the new ATF to:

- ◆ Help extend transmission fluid life.
- ◆ Smooth rough or hard shifting problems.